

# TRAVERSE 2019

CHEVROLET





## TRAVERSE HIGH COUNTRY

HIGH COUNTRY ELEVATES ANY EXPERIENCE, PROVIDING ALL THE THINGS YOU KNEW YOU WANTED AND THEN SOME. FEATURES INCLUDE:

UNIQUE HIGH COUNTRY CHROME GRILLE

LED D-OPTIC™ HEADLAMPS

TWIN-CLUTCH ADVANCED ALL-WHEEL DRIVE

20-IN. POLISHED-ALUMINUM WHEELS

CHROME ROOF RAILS

SKYSCAPE® DUAL-PANEL SUNROOF

EXCLUSIVE LOFT BROWN/JET BLACK INTERIOR

7-PASSENGER SEATING

HEATED AND VENTILATED FRONT SEATS

HEATED SECOND-ROW SEATS

POWER-FOLDING THIRD-ROW SEAT

FORWARD COLLISION ALERT<sup>1</sup> AND FOLLOWING DISTANCE INDICATOR<sup>1</sup>

LANE KEEP ASSIST WITH LANE DEPARTURE WARNING<sup>1</sup>

LANE CHANGE ALERT WITH SIDE BLIND ZONE ALERT<sup>1</sup>

FRONT PEDESTRIAN BRAKING<sup>1</sup>

INTELLIBEAM® AUTOMATIC HIGH BEAM

ADAPTIVE CRUISE CONTROL – ADVANCED<sup>1</sup> AND FORWARD AUTOMATIC BRAKING<sup>1</sup>



Traverse High Country in Iridescent Pearl Tricoat (extra-cost colour).

<sup>1</sup> Read the vehicle Owner's Manual for important feature limitations and information. <sup>2</sup> High Country shown seats seven. <sup>3</sup> Cargo and load capacity limited by weight and distribution.

## CONFIDENCE CAN TAKE YOU ANYWHERE.

Whatever you need to do, and wherever you want to go, the 2019 Traverse has the flexibility to help you get it done.

It starts with a choice of seating for up to eight<sup>2</sup> or up to 2781 L (98.2 cu. ft.) of cargo space<sup>3</sup>. It continues when you discover the capability of Traction Mode Select and available switchable all-wheel drive. And finally, a richly refined interior and a stunning exterior create a lasting impression.

With six different trim levels, there's sure to be one that fits your personality. Add in exceptional technology, safety and capability, and you'll have the vehicle you need to take on every challenge and pursue your Canadian Dream with confidence.

**FIND NEW ROADS™**



## **TRAVERSE PREMIER**

MODERN AND SOPHISTICATED, PREMIER RAISES THE BAR ON WHAT A PREMIUM MID-SIZE SUV CAN BE. THIS MODEL INCLUDES:

CHROME-ACCENTED GRILLE WITH CHROME INSERTS

LED D-OPTIC™ HEADLAMPS

SWITCHABLE ALL-WHEEL DRIVE

20-IN. ARGENT METALLIC MACHINED-FACE ALUMINUM WHEELS

DUAL-OUTLET EXHAUST WITH RECTANGULAR TIPS

CHROME ROOF RAILS

SKYSCAPE DUAL-PANEL SUNROOF

HANDS-FREE POWER LIFTGATE

BODY-COLOUR LOWER MOULDINGS WITH CHROME INSERTS

7-PASSENGER SEATING

FORWARD COLLISION ALERT<sup>1</sup> AND FOLLOWING DISTANCE INDICATOR<sup>1</sup>

LANE KEEP ASSIST WITH LANE DEPARTURE WARNING<sup>1</sup>

LANE CHANGE ALERT WITH SIDE BLIND ZONE ALERT<sup>1</sup>

LOW SPEED FORWARD AUTOMATIC BRAKING<sup>1</sup>

FRONT PEDESTRIAN BRAKING<sup>1</sup>

INTELLIBEAM AUTOMATIC HIGH BEAM



Traverse Premier in Black Currant Metallic (extra-cost colour).

<sup>1</sup> Read the vehicle Owner's Manual for important feature limitations and information.



### **TRAVERSE REDLINE EDITION**

WITH BOLD STYLE FOR A STREET-SMART AESTHETIC, THE REDLINE EDITION INCLUDES ALL THE FEATURES OF PREMIER, PLUS:

20-IN. GLOSS BLACK-PAINTED ALUMINUM WHEELS WITH RED ACCENTS

SIGNATURE BLACK AND RED TRAVERSE BADGING

BLACK ICE GRILLE AND FOG LAMP BEZELS

BLACK CHEVROLET BOWTIE EMBLEMS, ROOF RAILS AND MORE

DARK TAIL LAMPS



Traverse Premier in Mosaic Black Metallic (extra-cost colour) with available Redline Edition.



## **TRAVERSE RS**

THE BOLD, SPORTY RS TURNS HEADS  
AND ALWAYS STANDS OUT FROM THE CROWD.  
THIS MODEL INCLUDES:

310 HP 3.6L V6 ENGINE

SWITCHABLE ALL-WHEEL DRIVE

20-IN. DARK ANDROID-PAINTED  
ALUMINUM WHEELS

BLACK CHEVROLET BOWTIE EMBLEMS,  
GRILLE, FOG LAMP BEZELS, WINDOW TRIM  
AND ROOF RAILS

SKYSCAPE DUAL-PANEL SUNROOF

7-PASSENGER SEATING WITH JET BLACK  
LEATHER-APPOINTED SEATING SURFACES



Traverse RS in Cajun Red Tintcoat  
(extra-cost colour).



### **TRAVERSE LT TRUE NORTH EDITION**

WITH A LONG LIST OF STANDARD FEATURES YOUR FAMILY NEEDS, PLUS THE STYLE YOU WANT, TRAVERSE LT TRUE NORTH EDITION INCLUDES:

CHROME-ACCENTED GRILLE WITH CHROME INSERTS

BODY-COLOUR SIDE MIRRORS WITH LED TURN SIGNAL INDICATORS

FOG LAMPS

SWITCHABLE ALL-WHEEL DRIVE

20-IN. MACHINED-FACE ALUMINUM WHEELS WITH TECHNICAL GREY POCKETS

SKYSCAPE DUAL-PANEL SUNROOF

7-PASSENGER SEATING WITH LEATHER-APPOINTED SEATING SURFACES



Traverse LT True North Edition in  
Satin Steel Metallic (extra-cost colour).





## INTERIOR DESIGN

<sup>1</sup> Does not detect people or items. Always check rear seat before exiting.

Traverse High Country interior in Loft Brown with Jet Black accents.

### **STRETCH OUT. THERE'S PLENTY OF ROOM.**

Traverse offers great interior space in all three rows. Whichever seat you choose you're sure to enjoy the comfortable interior surroundings as the outside world passes by.

### **SEATING FOR 8. OR 7. YOU CHOOSE.**

Seating for eight includes second- and third-row flat-folding 60/40 split-bench seats (standard on LS; available on LT). Or choose seven-passenger seating with second-row flat-folding captain's chairs (standard on LT True North Edition and above).

### **DON'T FORGET YOUR LAPTOP.**

Or anything else in the back seats. Rear Seat Reminder<sup>1</sup> activates when the rear doors are opened and closed up to 10 minutes before or anytime while your vehicle is on, so when you turn off the engine under certain conditions, you will get a reminder to double-check for valuables left behind.

**A TOUCH OF CLASS.** Bright finishes such as Galvano chrome combine with sophisticated Piano Black accents to heighten the interior experience. The perforated leather appointments in both Premier and High Country provide the

luxury you deserve, with High Country adding sueded microfibre accents on the instrument panel and doors.


**TRAVEL FIRST CLASS.** Premier and High Country provide perforated leather-appointed seating surfaces and heated and ventilated front seats, along with a heated steering wheel that helps shake off the chill on cold mornings. Rear passengers haven't been forgotten, with heated seats in the second row.

**THE SEAT OF POWER.** Make every drive enjoyable. LT models and above have an 8-way power driver seat, while Premier,

High Country, RS and LT True North Edition models include a 6-way power front-passenger seat. Memory settings for the driver seat and exterior heated mirrors are included on Premier and High Country for the ultimate in customized comfort.

**A PEACEFUL PLACE.** With Active Noise Cancellation, a honed exterior that helps reduce wind noise and numerous other acoustic enhancements, Traverse is a quiet place for a conversation, whether you're using the hands-free phone function or talking to people in the third row.



A wide-angle photograph of the interior of a Chevrolet Traverse. The third row of seats is folded down, creating a large, flat cargo area. The second row of seats is also folded down, and the first row is visible in the background. The interior is dark-colored with light-colored leather-like upholstery on the seats. The dashboard and center console are visible in the background. The sun is shining through the windows, creating a warm, golden light.

**THERE'S ROOM FOR THAT. AND THAT.** You get the idea. Traverse offers up to 2781 L (98.2 cu. ft.) of maximum cargo space<sup>1</sup> when you fold the second and third rows virtually flat. And even with all the seats up, Traverse offers up to 651 L (23.0 cu. ft.) of cargo space<sup>1</sup> behind the third-row seats.

**A PLACE FOR EVERYTHING.** You'll need to bring along a whole lot of stuff to fill all the storage spaces in Traverse. There are dedicated spots for cellphones and umbrellas, plus a roomy centre console and 10 cupholders.

**THIRD-ROW CONVENIENCE.** Everything is easier with power-folding third-row seating on High Country. A simple touch of the buttons located in the rear cargo area folds the third row up or down, depending on how you plan to use your Traverse today.

<sup>1</sup> Cargo and load capacity limited by weight and distribution. Maximum cargo volume with rear seats folded down.





**1. PUT YOUR BEST FOOT FORWARD.**

Open and close the hands-free power liftgate by simply using a kicking motion under the rear bumper. LED lighting projects the Chevrolet bowtie so you'll know just where to kick. Standard on Premier and High Country.

**2. FILL IT UP.** Traverse offers an abundance of open storage spaces, 24 to be exact, including a front passenger-side pocket that can easily accommodate a tablet.

**3. HIDDEN TREASURE.** A large underfloor cargo area is easily accessible and is a great place to store valuables, since it's completely out of sight.

**4. SLIDE INTO THIRD.** The enhanced Smart Slide® second-row seat lets you slide and tilt forward the passenger-side seat for quick and easy access to the spacious third row. You can even leave an unoccupied forward-facing child seat in place – it just has to be properly installed using the LATCH system.





## TECHNOLOGY

### 1. Apple CarPlay® COMPATIBILITY.

With Apple CarPlay,<sup>1</sup> you can simply and smartly connect with some of your most used iPhone® features, including Maps, Music, Messages and Phone, right on your touch-screen display.

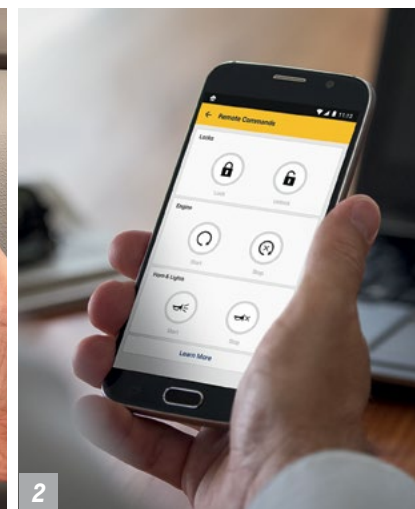
**2. myChevrolet® MOBILE APP.<sup>2</sup>** Simply download the app to your compatible smartphone and with an eligible active service plan<sup>3</sup> and a properly equipped vehicle, you can start or turn off your engine,<sup>4</sup> lock or unlock your doors,<sup>4</sup> send destinations to your available navigation<sup>5</sup> system, view key vehicle diagnostic information,<sup>6</sup> set parking reminders and more.

### 3. CONTROL IS AT YOUR FINGERTIPS.

Offering up to four modes, Traction Mode Select lets you adjust performance based on road and surface conditions: FWD for everyday driving, Off-Road on AWD models when you need extra torque to the rear wheels, 4x4 (AWD)/Snow (FWD) for better control on slippery surfaces, and Tow/Haul<sup>7</sup> when pulling a trailer.

### 4. NOW YOU SEE IT. NOW THEY WON'T.

An 8-in. diagonal colour touch-screen, standard on LT, LT True North Edition, RS, Premier and High Country, includes hidden, lockable storage behind the display to stow small valuables out of sight. There is also a USB port<sup>8</sup> for charging your smartphone.



<sup>1</sup> Vehicle user interface is a product of Apple and its terms and privacy statements apply. Requires compatible iPhone and data plan rates apply. <sup>2</sup> Available on select Apple and Android devices. Service availability, features and functionality are subject to limitations and vary by vehicle, device and the plan in which you are enrolled. Device data connection required. Visit [onstar.ca](http://onstar.ca) for more details. <sup>3</sup> Requires subscription to Remote Access Plan or Premium Access Plan. Remote Access Plan does not include emergency or security services. Services are subject to user terms and limitations, and vary by vehicle model. Visit [onstar.ca](http://onstar.ca) for more details. <sup>4</sup> Unlock feature requires automatic locks. Remote start requires GM factory-installed and enabled remote start system. Visit [onstar.ca](http://onstar.ca) for more details. <sup>5</sup> At time of printing, detailed map coverage is available for most major urban areas of the United States and for certain metropolitan areas of Canada (Vancouver, Calgary, Edmonton, Winnipeg, Windsor, London, Toronto, Ottawa, Montreal, Quebec City and Halifax). Coverage is significantly limited outside these areas. <sup>6</sup> Diagnostic capabilities vary by model and do not cover all vehicle conditions. Additional message and data rates may apply. Requires email address on file and enrollment in Vehicle Diagnostics. <sup>7</sup> Requires available Trailering Package. <sup>8</sup> Not compatible with all devices.



Traverse High Country interior in Loft Brown with Jet Black accents.

<sup>1</sup> Not compatible with all devices. <sup>2</sup> Chevrolet Infotainment System functionality varies by model. Full functionality requires compatible Bluetooth and smartphone, and USB connectivity for some devices. Data plan rates may apply. <sup>3</sup> Visit [onstar.ca](http://onstar.ca) for vehicle availability, coverage maps, details and system limitations. Services and connectivity vary by model and conditions as well as geographical and technical restrictions. 4G LTE service available in select markets. Requires active connected vehicle services and a data plan to access the vehicle's built-in Wi-Fi hotspot. Accessory Power must be active to use the Wi-Fi hotspot. Data plans provided by AT&T or its local service provider. Credit card is required for purchase. <sup>4</sup> Vehicle user interface is a product of Google and its terms and privacy statements apply. Requires the Android Auto app on Google Play and an Android compatible smartphone running Android 5.0 Lollipop or higher. Data plan rates apply.

**SETTING THE STANDARD.** Traverse aims to impress with all these standard features: Keyless Open and Start, tri-zone automatic climate control, USB ports<sup>1</sup> in all rows, Chevrolet Infotainment System<sup>2</sup> with a touch-screen display, a theft-deterrent system, and so much connectivity technology you might never want to leave.

**ON-COMMAND CONNECTIVITY.** The standard Chevrolet Infotainment System<sup>2</sup> lets you handle calls, play music and easily access contacts from your compatible smartphone by tapping the colour touch-screen or through voice commands.

**Wi-Fi® IN YOUR TRAVERSE.** Chevrolet offers an available built-in 4G LTE Wi-Fi® hotspot<sup>3</sup> (data plan required) providing a fast Internet connection for up to seven compatible devices.

**EASY ANDROID CONNECTION.** With Android Auto™<sup>4</sup> compatibility, you can interact with select smartphone apps. This system takes some of your compatible Android™ phone's features and puts them on the Chevrolet Infotainment System<sup>2</sup> display in a smart, simple manner. You can access your phone, text messages, music, navigation and more.





**SURROUND VISION!** This feature can help you parallel park and manoeuvre at low speeds into tight garage spaces with ease. That's because you get twice the view when you look at just one screen. Using four strategically placed cameras, Surround Vision creates a virtual

bird's-eye view of the areas immediately surrounding your Traverse. All camera viewpoints simultaneously merge to transmit a clear side-by-side digital image to the display screen. Standard on LT True North Edition and above.

**ONSTAR AUTOMATIC CRASH RESPONSE.**

In a crash, built-in sensors are designed to send a signal that can alert a specially trained, Emergency Medical Dispatch-certified advisor<sup>2</sup> who can help you get the assistance you need – even if you

can't ask for it. The advisor can use GPS technology to help pinpoint your vehicle's location. This service requires a paid subscription to the OnStar Safety & Security Plan<sup>3</sup>

<sup>1</sup> Safety or driver assistance features are no substitute for the driver's responsibility to operate the vehicle in a safe manner. The driver should remain attentive to traffic, surroundings and road conditions at all times. Visibility, weather and road conditions may affect feature performance. Read the vehicle Owner's Manual for more important feature limitations and information. <sup>2</sup> OnStar Emergency advisors are certified by the International Academies of Emergency Dispatch. <sup>3</sup> OnStar acts as a link to existing emergency service providers. Not all vehicles may transmit all crash data. Roadside services provided by Allstate Roadside Services, and limitations and restrictions apply. Stolen Vehicle Assistance requires armed factory-installed theft-deterrent system and selection of notification communication preference(s). These services are intended to assist with vehicle recovery and do not prevent theft or protect against damage or loss. Additional messaging and data rates may apply. Services are subject to user terms and limitations, and vary by vehicle model. Visit [onstar.ca](http://onstar.ca) for more details.





1

**1. REAR CAMERA MIRROR!** This technology projects a wide-angle view of the area behind your Traverse. The driver can easily toggle between the mirror surface and a video screen that provides a view without the obstruction of head restraints, rear-seat passengers or cargo. Standard on LT True North Edition and above.



2

**2. TEEN DRIVER!** Perfect for new drivers, Teen Driver technology helps encourage better driving habits by providing an in-vehicle report card that monitors the activation frequency of certain available safety tech features, muting the audio system when front-seat occupants aren't wearing their seat belts, and giving audible and visual warnings when the vehicle is travelling over a predetermined speed.



3

**3. FRONT CENTRE SIDE-IMPACT AIRBAG.** Traverse continues the use of an industry-first airbag<sup>2</sup> that deploys from the right side of the driver seat and positions itself between the front seats for added cushioning and restraint to help protect the driver and passenger in the event of a side-impact collision.

<sup>1</sup> Safety or driver assistance features are no substitute for the driver's responsibility to operate the vehicle in a safe manner. The driver should remain attentive to traffic, surroundings and road conditions at all times. Visibility, weather and road conditions may affect feature performance. Read the vehicle Owner's Manual for more important feature limitations and information. <sup>2</sup> A NOTE ON CHILD SAFETY: Sitting too close to an airbag when it deploys can increase the risk of serious injury or death. Always properly wear your seat belt. Always use seat belts and the correct child restraint for your child's age and size, even with airbags. Even in vehicles equipped with the Passenger Sensing System, children are safer when properly secured in a rear seat in the appropriate infant, child or booster seat. Never place a rear-facing infant restraint in the front seat of any vehicle equipped with an active frontal airbag. See your vehicle Owner's Manual and child safety seat instructions for more safety information.



[illegible]

**SAFETY STARTS WITH YOU.** Safety or driver assistance features are no substitute for the driver's responsibility to operate the vehicle in a safe manner. The driver should remain attentive to traffic, surroundings and road conditions at all times. Visibility, weather and road conditions may affect feature performance. Read the vehicle Owner's Manual for more important feature limitations and information.



## WE'RE SERIOUS ABOUT SAFETY.

Protection is good, but prevention is better. Offering advanced safety technologies, Traverse uses available cameras, ultrasonic sensors and radar to detect potential hazards to help you avoid collisions before they happen.



### **ADAPTIVE CRUISE CONTROL – ADVANCED.**

This standard feature on High Country can automatically adapt your cruise control speed in order to maintain a driver-selected following gap to vehicles detected ahead while the driver steers, reducing the need to frequently brake and accelerate.



### **FRONT PEDESTRIAN BRAKING.**

If the system detects that a pedestrian is directly ahead and a collision is imminent, and the driver has not already applied the brakes, the system alerts the driver and may even automatically apply the brakes to help the driver avoid or reduce the harm caused by the collision. Performance is limited at night. Standard on High Country and Premier.



### **FORWARD AUTOMATIC BRAKING.**

Using the same radar sensors as Adaptive Cruise Control – Advanced, Forward Automatic Braking is engineered to help mitigate collisions or prevent them at very low speeds. If the system detects an imminent front-end collision with a detected vehicle, it is designed to alert the driver and can automatically apply the brakes if you have not already done so. Standard on High Country.



### **LOW SPEED FORWARD AUTOMATIC BRAKING.**

Camera-based Low Speed Forward Automatic Braking is designed to help prevent or mitigate collisions at speeds below 80 km/h. Standard on Premier.



### **FORWARD COLLISION ALERT AND FOLLOWING DISTANCE INDICATOR.**

The Forward Collision Alert feature is designed to monitor how close your vehicle is to a detected vehicle in front of you. If the system determines that a front-end collision with a detected vehicle is imminent, it is designed to alert the driver to a potential crash. The available Following Distance Indicator can provide the driver with the following time to a moving vehicle detected in front of them. Standard on High Country and Premier.



### **LANE KEEP ASSIST WITH LANE DEPARTURE WARNING.**

This camera-based system monitors road lines and can provide gentle steering wheel turns (and Lane Departure Warning alerts if necessary) to help drivers avoid unintentionally drifting out of their detected lane when they are not actively steering and their turn signal is not activated. Standard on High Country and Premier.



**REAR VISION CAMERA.** When the transmission is in Reverse, the Rear Vision Camera with dynamic guiding lines allows the driver to view objects directly behind the vehicle via the screen in the centre stack. So it's easier to back up or park.



### **LANE CHANGE ALERT WITH SIDE BLIND ZONE ALERT.**

Radar sensors in the rear corners of the vehicle are designed to help detect fast-approaching vehicles in the adjacent lanes as well as moving vehicles in the side mirror blind zones. Amber icons in the exterior mirrors indicate a vehicle's presence. Standard on LT models and above.



### **REAR CROSS TRAFFIC ALERT.**

Using radar sensors, this feature is designed to alert the driver to crossing traffic behind Traverse when in Reverse. Audible warnings, as well as visual alerts on the Rear Vision Camera screen, are triggered if approaching vehicles are detected. Standard on LT models and above.



**REAR PARK ASSIST.** This feature is designed to alert the driver, when in Reverse, by sounding an audible alert and providing visual indication on the Rear Vision Camera screen when it detects certain stationary objects in close proximity behind the vehicle. Standard on LT models and above.



### **INTELLIBEAM HEADLAMPS.**

When oncoming headlamps are sensed or when tail lamps are detected in front of the vehicle, the available IntelliBeam high beam assist intuitively adjusts between low and high beams. Standard on High Country and Premier.



## PERFORMANCE

Traverse Premier in  
Black Currant Metallic  
(extra-cost colour).

# THE JOURNEY IS AS IMPORTANT AS THE DESTINATION.



<sup>1</sup> Traverse FWD highway fuel consumption estimate is 8.8 L/100 km and the city fuel consumption estimate is 13.0 L/100 km. Traverse AWD highway fuel consumption estimate is 9.5 L/100 km and the city fuel consumption estimate is 13.7 L/100 km. Fuel consumption estimates based on GM testing in accordance with Government of Canada approved test methods. Refer to [vehicles.nrcan.gc.ca](http://vehicles.nrcan.gc.ca) for details. Your actual fuel consumption may vary. <sup>2</sup> Before you buy a vehicle or use it for trailering, carefully review the Trailering section of the Owner's Manual. The weight of passengers, cargo and options or accessories may reduce the amount you can tow.

**3.6L V6 ENGINE.** Delivering more than 300 horsepower, this engine provides smooth, effortless performance. And our 3.6L V6 features a number of fuel-saving technologies, such as Variable Valve Timing and Direct Injection, so you don't have to sacrifice efficiency in the name of power.<sup>1</sup>

### **INTELLIGENT STOP/START TECHNOLOGY.**

In certain conditions, the engine will automatically shut off when the brake is applied and the vehicle comes to a stop. When the brake is released, the engine automatically turns back on. It's a smart way to help save gas in stop-

and-go city driving. It's so seamless, you might not notice it at all.

### **9-SPEED AUTOMATIC TRANSMISSION.**

Tuned for smoother shifts and fuel-efficient cruising, the 9-speed automatic transmission is standard on Traverse and perfectly complements the 3.6L V6 engine.

**TOW UP TO 2268 KG (5000 LB.)<sup>2</sup>** With the 3.6L V6 engine and factory-installed Trailering Package, you can tow a mid-size camper, jet skis or boat on your next adventure. Standard on Traverse LT models and above, the Trailering

Package includes a heavy-duty cooling system and trailer hitch.

**SWITCHABLE ALL-WHEEL DRIVE.** This available system helps enhance traction and control on slippery or snow-covered roads. Conveniently, you can leave switchable AWD on year-round, since the rear wheels only engage when the system senses reduced traction. In FWD mode, AWD components completely disengage for greater fuel efficiency.

### **TWIN-CLUTCH ALL-WHEEL DRIVE.**

High Country includes an advanced AWD system capable of transferring up to

100% of torque to either the front or rear axle. Also, across the rear axle, the electronically controlled rear differential can direct up to 100% of available torque to either rear wheel with the best traction.

**HANDLING IS A HIGH POINT.** The current Traverse is up to 136 kg (300 lb.) lighter than the previous generation. Plus, it features variable-assist Electric Power Steering and a 5-link independent rear suspension. All that adds up to an SUV with a tight turning circle and light, nimble steering that helps you feel more connected to the road.



## SPECIAL FEATURES



Black Roof Rack Cross Rail Package  
available from Chevrolet Accessories.



Rear-Seat Infotainment System  
available with or without DVD player  
from Chevrolet Accessories.



SkyScape dual-panel power sunroof  
standard on LT True North Edition,  
RS, Premier and High Country.



Premium All-Weather Floor Liners  
available from Chevrolet Accessories.



SELECT VEHICLE FEATURES

TRAVERSE LS	Traverse LS includes these standard features:
310 hp 3.6L DOHC V6 engine with Direct Injection (DI) and Variable Valve Timing (VVT) with Auto Stop/Start engine feature	
9-speed automatic transmission with manual mode and Driver Shift Control	
4-wheel disc brakes with Duralife® brake rotors, Anti-lock Braking System (ABS), Brake Assist and Hill Start Assist	
StabiliTrak® Electronic Stability Control System and traction control	
18-in. Bright Silver-painted aluminum wheels	
Heated, power exterior mirrors, Black	
Rear Vision Camera¹	
Keyless Open and Start with extended-range remote keyless entry	
Content theft alarm	
Airbags²; Frontal for driver and front passenger with Passenger Sensing System and airbag suppression; Seat-mounted side-impact for driver and front passenger; Inboard driver seat-mounted side-impact; Head curtain for all outboard seating positions	
Driver Information Centre with 3.5-in. monochromatic display	
Tri-zone automatic climate controls with humidity sensor	
Power windows and programmable door locks	
Child-security rear door locks, manual	
Tilt and telescopic adjustable steering column and cruise control	
Steering wheel-mounted Bluetooth,³³ cruise and audio system controls	
Sunshades with illuminated vanity mirrors	
Seating for eight with front bucket seats, 2nd-row Smart Slide 60/40 folding split-bench seat and 3rd-row 60/40 folding split-bench seat	
Umbrella holders in driver and front-passenger doors	
Chevrolet Infotainment System⁴ with 7-in. colour touch-screen display	
Bluetooth®³ hands-free phone connectivity and wireless audio streaming	
USB ports⁵; two in front row, two charge-only USB ports in 2nd row and 3rd row	
1-month trial of Chevrolet Connected Services and OnStar Safety & Security Plan coverage⁶	
Chevrolet Connected Access⁷ with 10 years of standard connectivity, which enables services such as Vehicle Diagnostics⁸; Dealer Maintenance Notification⁹ and more	
Built-in 4G LTE Wi-Fi® hotspot⁹; includes 1-month or 3 GB data plan trial (whichever comes first) from vehicle delivery date	

TRAVERSE LT	Traverse LT enhances LS features with:
Trailer Package with heavy-duty cooling system	
Fog lamps	
Heated power exterior mirrors with turn signal indicators, body-colour	
Roof-mounted side rails, Black	
Lane Change Alert with Side Blind Zone Alert¹	
Rear Cross Traffic Alert;¹ Rear Park Assist¹	
Programmable power rear liftgate	
Remote vehicle starter system	
Driver Information Centre with 4.2-in. multi-colour display	
Universal home remote programmable transmitter	
Leather-wrapped steering wheel with Bluetooth,³³ cruise and audio system controls	
Seating for seven with 2nd-row Smart Slide captain's chairs	
Heated front bucket seats	
Power 8-way driver-seat adjuster with power lumbar adjuster	
Chevrolet Infotainment System⁴ with 8-in. colour touch-screen display	
SiriusXM® Radio¹⁰ 3-month trial subscription	

TRAVERSE LT TRUE NORTH EDITION	Traverse LT True North Edition enhances LT features with:
Switchable all-wheel-drive system	
20-in. machined-face aluminum wheels with Technical Grey pockets	
Surround Vision¹ with bird's-eye view, includes Rear Vision Camera¹	
Rear Camera Mirror¹ with auto-dimming feature	
SkyScape 2-panel sunroof, power front and fixed rear with sunscreens	
Leather-appointed seating surfaces	
Power 6-way front-passenger seat adjuster with power lumbar adjuster	
Chevrolet Infotainment System⁴ with Navigation¹¹ and 8-in. colour touch-screen display	
10-speaker Bose premium audio system with RichBass subwoofer in centre console	
120-volt AC power outlet, on rear of centre console	

TRAVERSE RS	Traverse RS enhances or substitutes LT True North Edition features with:
20-in. Dark Android-painted aluminum wheels	
Black bowtie emblems, Black Ice grille and Black roof-mounted side rails	

TRAVERSE PREMIER	Traverse Premier enhances LT True North Edition features with:
20-in. Argent Metallic machined-face aluminum wheels	
Low Speed Forward Automatic Braking¹	
Front Pedestrian Braking¹	
Forward Collision Alert¹ and Following Distance Indicator¹	
LED D-Optic™ bi-function projector-beam headlamps	
IntelliBeam automatic high beam on/off	
Lane Keep Assist with Lane Departure Warning¹	
Roof-mounted side rails, chrome	
Heated, power exterior mirrors with turn signal indicators and driver-side auto-dimming and memory features, body-colour	
Programmable power rear liftgate – hands-free	
Power tilt and telescopic adjustable steering column	
Heated steering wheel with automatic activation feature	
Perforated leather-appointed seating surfaces	
Ventilated front bucket seats	
Driver-side 2-position memory	
Heated 2nd-row seats	
Wireless charging station¹²	

TRAVERSE HIGH COUNTRY	Traverse High Country enhances Premier features with:
Twin-clutch advanced all-wheel-drive system	
20-in. polished-aluminum wheels	
Adaptive Cruise Control – Advanced¹ and Forward Automatic Braking¹	
Premium perforated leather-appointed seating surfaces	
3rd-row 60/40 power-folding split-bench seat	

**1** Read the vehicle Owner's Manual for important feature limitations and information. **2** A NOTE ON CHILD SAFETY: Always use seat belts and the correct child restraint for your child's age and size, even with airbags. Even in vehicles equipped with the Passenger Sensing System, children are safer when properly secured in a rear seat in the appropriate infant, child or booster seat. Never place a rear-facing infant restraint in the front seat of any vehicle equipped with an active frontal airbag. See your vehicle Owner's Manual and child safety seat instructions for more safety information. **3** Visit mychevrolet.ca to find out which phones are compatible with the vehicle. **4** Chevrolet Infotainment System functionality varies by model. Full functionality requires compatible Bluetooth and smartphone, and USB connectivity for some devices. Data plan rates may apply. **5** Not compatible with all devices. **6** Includes navigation services, Remote Access Plan, plus a 3 GB or 1-month (whichever comes first) data plan trial from the vehicle delivery date. Data plan provided by AT&T or its local service provider. Requires vehicle electrical system (including battery), wireless service and GPS satellite signal to be available and operating for features to function properly. Visit onstar.ca for more details. Availability subject to change. **7** Standard connectivity available only to original purchaser for 10 years. Connected Access services are subject to change. Does not include emergency or security services. Compatible 4G LTE wireless coverage required. See onstar.ca for details and limitations. **8** Capabilities vary by model. Message and data rates may apply. Requires contact method on file and enrollment to receive alerts. Not all issues will deliver alerts or notifications. See onstar.ca for details and limitations. **9** Visit onstar.ca for vehicle availability, coverage maps, details and system limitations. Services and connectivity vary by model and conditions as well as geographical and technical restrictions. 4G LTE service available in select markets. Requires active connected vehicle services and a data plan to access the vehicle's built-in Wi-Fi hotspot. Accessory Power must be active to use the Wi-Fi hotspot. Data plans provided by AT&T or its local service provider. Credit card is required for purchase. **10** Available in 10 Canadian provinces, 3 territories and the 48 contiguous United States. Subscription sold separately after trial period. If you decide to continue your service at the end of your trial subscription, the plan you choose will automatically renew and bill at then-current rates until you call 1-888-539-7474 to cancel. Other fees and taxes will apply. All fees and programming subject to change. See the Customer Agreement for complete terms at siriusxm.ca/terms. **11** At time of printing, detailed map coverage is available for most major urban areas of the United States and for certain metropolitan areas of Canada (Vancouver, Calgary, Edmonton, Winnipeg, Windsor, London, Toronto, Ottawa, Montreal, Quebec City and Halifax). Coverage is significantly limited outside these areas. **12** The system wirelessly charges one PMA- or Qi-compatible mobile device. Some devices require an adaptor or back cover. To check for phone or other device compatibility, visit mychevrolet.ca for details.




## SPECIFICATIONS

● STANDARD ○ AVAILABLE – NOT AVAILABLE LT TNE = LT TRUE NORTH EDITION PRE = PREMIER HC = HIGH COUNTRY

	LS	LT	LTNE	RS	PRE	HC
<b>SAFETY AND SECURITY</b>						
Forward Collision Alert <sup>1</sup> and Following Distance Indicator <sup>1</sup>	–	–	–	–	●	●
Lane Keep Assist with Lane Departure Warning <sup>1</sup>	–	–	–	–	●	●
Lane Change Alert with Side Blind Zone Alert <sup>1</sup>	–	●	●	●	●	●
Low Speed Forward Automatic Braking <sup>1</sup>	–	–	–	–	●	–
Front Pedestrian Braking <sup>1</sup>	–	–	–	–	●	●
Forward Automatic Braking <sup>1</sup>	–	–	–	–	–	●
1-month trial of Chevrolet Connected Services and OnStar Safety & Security Plan coverage <sup>2</sup>	●	●	●	●	●	●
Rear Cross Traffic Alert <sup>1</sup>	–	●	●	●	●	●
Rear Park Assist <sup>1</sup>	–	●	●	●	●	●
Rear Vision Camera <sup>1</sup>	●	●	–	–	–	–
Surround Vision <sup>1</sup> – with bird's-eye view, includes Rear Vision Camera <sup>1</sup>	–	–	●	●	●	●
Safety restraints – 3-point belts for all seating positions, front seat belt pretensioners and dual-mode retractors – LATCH (Lower Anchors and Tethers for Children), rear seats	●	●	●	●	●	●
Security system – content theft alarm, audible/visible, programmable	●	●	●	●	●	●
StabiliTrak – Electronic Stability Control System	●	●	●	●	●	●
Teen Driver <sup>1</sup> – customizable vehicle features	●	●	●	●	●	●
Theft-deterrent system – electronic immobilizer	●	●	●	●	●	●
Traction control – electronic, full-function	●	●	●	●	●	●
<b>MECHANICAL</b>						
Brakes – power, 4-wheel disc with Duralife rotors, 4-wheel Anti-lock Braking System (ABS) with Panic Brake Assist and Hill Start Assist	●	●	●	●	●	●
Drive – front-wheel (FWD)	●	●	–	–	–	–
– switchable, all-wheel (AWD)	○	○	●	●	●	–
– twin clutch, advanced all-wheel (AWD)	–	–	–	–	–	●
Engine – 3.6L DOHC V6 with DI and VVT						
Horsepower – 310 @ 6800 rpm;	●	●	●	●	●	●
Torque – 266 lb.-ft. @ 2800 rpm	●	●	●	●	●	●
– Auto Stop/Start feature	●	●	●	●	●	●
Engine block heater	○	○	○	○	○	○

	LS	LT	LTNE	RS	PRE	HC
<b>MECHANICAL (CONTINUED)</b>						
Exhaust system – aluminized stainless steel	●	●	●	●	●	●
– dual, rounded tips	●	●	●	●	–	–
– dual, rectangular tips	–	–	–	–	●	●
Steering – power, electric, rack-and-pinion, variable-assist	●	●	●	●	●	●
Suspension – 4-wheel independent	●	●	●	●	●	●
Transmission – 9-speed automatic with overdrive and Driver Shift Control	●	●	●	●	●	●
Traction Mode Select – adjusts the vehicle's throttle response, shift mapping and stability control	●	●	●	●	●	●
Trailer Package – includes heavy-duty cooling system and trailer hitch	–	●	●	●	●	●
<b>EXTERIOR</b>						
Active aero shutters – upper and lower	●	●	●	●	●	–
– upper	–	–	–	–	–	●
Door handles – body-colour	●	●	●	●	–	–
– chrome	–	–	–	–	● <sup>3</sup>	●
Glass – solar-absorbing, deep-tinted on all windows behind front doors	●	●	●	●	●	●
Liftgate – rear, manual	●	–	–	–	–	–
– rear, power with programmable height opening	–	●	●	●	–	–
– rear, hands-free, power with programmable height opening	–	–	–	–	●	●
Lighting – LED daytime running lamps with exterior automatic lamp control	●	●	●	●	●	●
– High-Intensity Discharge (HID) headlamps	●	●	●	●	–	–
– LED D-Optic™ bi-function projector-beam headlamps	–	–	–	–	●	●
– IntelliBeam automatic high beam on/off	–	–	–	–	●	●
– fog lamps	–	●	●	●	●	●
– LED tail lamps	●	●	●	●	●	●
Mirrors – power remote control, heated	●	●	●	●	●	●
– with integrated LED turn signal indicators	–	●	●	●	●	●
– auto-dimming driver-side	–	–	–	–	●	●
– Black caps	●	–	–	–	○ <sup>4</sup>	–
– body-colour caps	–	●	●	●	● <sup>3</sup>	●
Mouldings – bodyside, Black	●	●	●	●	○ <sup>4</sup>	–
– bodyside, body-colour with chrome insert	–	–	–	–	● <sup>3</sup>	–
– rocker, Black	●	●	●	●	○ <sup>4</sup>	–
– rocker, body-colour	–	–	–	–	● <sup>3</sup>	●

	LS	LT	LTNE	RS	PRE	HC
<b>EXTERIOR (CONTINUED)</b>						
Tires – P225/65R18 all-season <sup>†</sup>	●	●	–	–	–	–
– P255/55R20 all-season <sup>†</sup>	–	–	●	●	●	●
– compact spare	●	●	●	●	●	●
Wheels, aluminum						
– 18" Bright Silver-painted	●	●	–	–	–	–
– 20" machined-face with Technical Grey pockets	–	–	●	–	–	–
– 20" Dark Android-painted	–	–	–	●	–	–
– 20" Argent Metallic machined-face	–	–	–	–	●	–
– 20" Gloss Black-painted with Red accents	–	–	–	–	○ <sup>4</sup>	–
– 20" polished	–	–	–	–	–	●
Wipers – front with variable delay (intermittent)	●	●	●	●	●	●
– rear with variable delay (intermittent)	●	●	●	●	●	●
<b>INTERIOR</b>						
Climate control – automatic, tri-zone climate controls with humidity sensor	●	●	●	●	●	●
Console – front floor with armrest, 2 cupholders and lamp in storage bin	●	●	●	●	●	●
Cruise control – electronic	●	●	●	●	●	–
– Adaptive Cruise Control – Advanced <sup>†</sup>	–	–	–	–	–	●
Floor mats – all rows, carpeted	●	●	●	●	●	●
Instrumentation – analogue gauges (includes speedometer, tachometer, coolant temperature and fuel gauges)	●	●	●	●	●	●
– Driver Information Centre (includes 3.5-in. monochromatic display with indicators for low fuel, oil life monitoring system, tire pressure monitoring system with Tire Fill Alert [excludes spare tire], average fuel consumption, fuel range, average speed, vehicle programmable features, compass and message centre)	●	–	–	–	–	–
– Driver Information Centre (includes same as above with 4.2-in. multi-colour display)	–	●	●	●	●	●
– Rear Seat Reminder <sup>‡</sup> notification	●	●	●	●	●	●
Lighting – dome, delayed entry/exit, theatre dimming, roof courtesy, front and rear reading lamps and cargo area	●	●	●	●	●	●
– ambient lighting on front of floor console and door map pockets	●	●	●	●	●	●

<sup>1</sup> Read the vehicle Owner's Manual for important feature limitations and information. <sup>2</sup> Includes navigation services, Remote Access Plan, plus a 3 GB or 1-month (whichever comes first) data plan trial from the vehicle delivery date. Data plan provided by AT&T or its local service provider. Requires vehicle electrical system (including battery), wireless service and GPS satellite signal to be available and operating for features to function properly. Visit [onstar.ca](http://onstar.ca) for more details. Availability subject to change. <sup>3</sup> Black with available Redline Edition. <sup>4</sup> Included and only available with Redline Edition. <sup>5</sup> Does not detect people or items. Always check rear seat before exiting. <sup>†</sup> All-season tires may not satisfy winter tire requirements in all regions of the country. Tires specifically designed for severe winter conditions and marked with the "winter tire" symbol  may be required during certain months or in certain regions. Contact your Provincial, Municipal or local road authority for information regarding which tires are required in your particular area.



## SPECIFICATIONS (CONTINUED)

● STANDARD ○ AVAILABLE – NOT AVAILABLE LT TNE = LT TRUE NORTH EDITION PRE = PREMIER HC = HIGH COUNTRY

	LS	LT	LTNE	RS	PRE	HC
<b>INTERIOR (CONTINUED)</b>						
Locks – power, programmable with lock-out protection	●	●	●	●	●	●
– Keyless Open and Start includes passive entry with Push-Button Start, extended-range remote keyless entry system and panic feature	●	●	●	●	●	●
Mirror – rear-view, manual day/night	●	●	–	–	–	–
– Rear Camera Mirror <sup>1</sup> ; auto-dimming	–	–	●	●	●	●
Steering column – tilt and telescopic adjustable, manual	●	●	●	●	–	–
– tilt and telescopic adjustable, power	–	–	–	–	●	●
Steering wheel – Bluetooth <sup>2</sup> ; <sup>2</sup> cruise and audio system controls	●	●	●	●	●	●
– leather-wrapped	–	●	●	●	●	●
– heated with automatic activation feature	–	–	–	–	●	●
Sunroof – SkyScape, 2-panel, power front and fixed rear with sunscreen	–	–	●	●	●	●
Vehicle starter system – remote	–	●	●	●	●	●
Windows – power, express-down all windows and rear window lock-out features	●	●	●	●	●	●
– power, driver express-up/-down	–	●	●	●	●	●
<b>SEATS</b>						
Reclining front bucket seats with adjustable head restraints and seatback map pockets	●	●	–	–	–	–
– with Premium Cloth seating surfaces	●	●	–	–	–	–
– with leather-appointed seating surfaces	–	–	●	●	–	–
– with perforated leather-appointed seating surfaces	–	–	–	–	●	–
– with Premium perforated leather-appointed seating surfaces	–	–	–	–	–	●

	LS	LT	LTNE	RS	PRE	HC
<b>SEATS (CONTINUED)</b>						
8-passenger seating – with 2nd-row Smart Slide 60/40 folding split-bench seat and 3rd-row 60/40 folding split-bench seat	●	○	○ <sup>3</sup>	–	–	–
7-passenger seating – with 2nd-row Smart Slide captain's chairs and 3rd-row 60/40 folding split-bench seat	–	●	●	●	●	● <sup>4</sup>
Manual 4-way driver-seat adjuster	●	–	–	–	–	–
Manual 4-way front-passenger seat adjuster	●	●	–	–	–	–
Power 8-way driver-seat adjuster and power lumbar adjuster	–	●	●	●	●	●
Power 6-way front-passenger seat adjuster and power lumbar adjuster	–	–	●	●	●	●
Heated – front bucket seats	–	●	●	●	●	●
– 2nd-row seats	–	–	–	–	●	●
Ventilated front bucket seats	–	–	–	–	●	●
Memory Package	–	–	–	–	●	●
Includes 2-position driver seat, power tilt and telescopic adjustable steering column and exterior rear-view mirrors						
<b>INFOTAINMENT (CONTINUED)</b>						
Chevrolet Infotainment System <sup>5</sup>	●	–	–	–	–	–
Includes 7-in. diagonal colour touch-screen display with AM/FM stereo, Bluetooth <sup>2</sup> phone connectivity and wireless audio streaming, and Android Auto <sup>TM6</sup> and Apple CarPlay <sup>®7</sup> compatibility						
Chevrolet Infotainment System <sup>5</sup>	–	●	–	–	–	–
Includes 8-in. diagonal colour touch-screen display with Chevrolet Infotainment System features above and USB port <sup>8</sup> behind touch-screen display						

	LS	LT	LTNE	RS	PRE	HC
<b>INFOTAINMENT</b>						
Chevrolet Infotainment System <sup>5</sup> with Navigation <sup>9</sup>	–	–	●	●	●	●
Includes 8-in. diagonal colour touch-screen display with Chevrolet Infotainment System features above and SiriusXM <sup>®</sup> Traffic <sup>10</sup> with 3-month trial subscription						
Built-in 4G LTE Wi-Fi <sup>®</sup> hotspot <sup>11</sup> includes 1-month or 3 GB data plan trial (whichever comes first) from vehicle delivery date	●	●	●	●	●	●
Chevrolet Connected Access <sup>12</sup> with 10 years of standard connectivity, which enables services such as Vehicle Diagnostics <sup>13</sup> , Dealer Maintenance Notification <sup>13</sup> and more	●	●	●	●	●	●
6-speaker audio system	●	●	–	–	–	–
10-speaker Bose premium audio system with RichBass subwoofer in centre console	–	–	●	●	●	●
SiriusXM <sup>®</sup> Radio <sup>14</sup> 3-month trial subscription	–	●	●	●	●	●
USB ports <sup>8</sup> two in front row, two charge-only USB ports in 2nd row and 3rd row	●	●	●	●	●	●
Power outlet – 120-volt AC power outlet, on rear of floor console	–	–	●	●	●	●
Wireless charging station <sup>15</sup>	–	–	–	–	●	●
<b>AVAILABLE PACKAGE</b>						
Redline Edition	–	–	–	–	○ <sup>16</sup>	–
Includes 20" Gloss Black-painted aluminum wheels with Red accents, Gloss Black window surround, dark tail lamps, Black mirror caps and door handles, Black-painted rocker and wheel openings with Black Ice inserts, Black Traverse badges with Red outline, Black Chevrolet bowtie emblems, Black roof-mounted side rails, and Black Ice grille, fog lamp bezels and license plate appliqué						

<sup>1</sup> Read the vehicle Owner's Manual for important feature limitations and information. <sup>2</sup> Visit [mychevrolet.ca](http://mychevrolet.ca) to find out which phones are compatible with the vehicle. <sup>3</sup> Requires 8-passenger seating and Dark Galvanized leather appointments with Jet Black accents. <sup>4</sup> High Country features 3rd-row power-folding 60/40 split-bench seat. <sup>5</sup> Chevrolet Infotainment System functionality varies by model. Full functionality requires compatible Bluetooth and smartphone, and USB connectivity for some devices. Data plan rates may apply. <sup>6</sup> Vehicle user interface is a product of Google and its terms and privacy statements apply. Requires the Android Auto app on Google Play and an Android compatible smartphone running Android 5.0 Lollipop or higher. Data plan rates apply. <sup>7</sup> Vehicle user interface is a product of Apple and its terms and privacy statements apply. Requires compatible iPhone and data plan rates apply. <sup>8</sup> Not compatible with all devices. <sup>9</sup> At time of printing, detailed map coverage is available for most major urban areas of the United States and for certain metropolitan areas of Canada (Vancouver, Calgary, Edmonton, Winnipeg, Windsor, London, Toronto, Ottawa, Montreal, Quebec City and Halifax). Coverage is significantly limited outside these areas. <sup>10</sup> SiriusXM satellite radio service and SiriusXM Traffic subscriptions are sold as a package after the trial period. If you decide to continue service after your trial, the subscription plan you choose will automatically renew thereafter and you will be charged according to your chosen payment method at then-current rates. Fees and taxes apply. To cancel, you must call 1-866-635-0528. See the Customer Agreement for complete terms at [siriusxm.ca/terms](http://siriusxm.ca/terms). All fees and programming subject to change. SiriusXM Traffic is available only in select markets. For more information, see [siriusxm.ca/traffic](http://siriusxm.ca/traffic). <sup>11</sup> Visit [onstar.ca](http://onstar.ca) for vehicle availability, coverage maps, details and system limitations. Services and connectivity vary by model and conditions as well as geographical and technical restrictions. 4G LTE service available in select markets. Requires active connected vehicle services and a data plan to access the vehicle's built-in Wi-Fi hotspot. Accessory Power must be active to use the Wi-Fi hotspot. Data plans provided by AT&T or its local service provider. Credit card is required for purchase. <sup>12</sup> Standard connectivity available only to original purchaser for 10 years. Connected Access services are subject to change. Does not include emergency or security services. Compatible 4G LTE wireless coverage required. See [onstar.ca](http://onstar.ca) for details and limitations. <sup>13</sup> Capabilities vary by model. Message and data rates may apply. Requires contact method on file and enrollment to receive alerts. Not all issues will deliver alerts or notifications. See [onstar.ca](http://onstar.ca) for details and limitations. <sup>14</sup> Available in 10 Canadian provinces, 3 territories and the 48 contiguous United States. Subscription sold separately after trial period. If you decide to continue your service at the end of your trial subscription, the plan you choose will automatically renew and bill at then-current rates until you call 1-888-539-7474 to cancel. Other fees and taxes will apply. All fees and programming subject to change. See the Customer Agreement for complete terms at [siriusxm.ca/terms](http://siriusxm.ca/terms). <sup>15</sup> The system wirelessly charges one PMA- or Qi-compatible mobile device. Some devices require an adaptor or back cover. To check for phone or other device compatibility, visit [mychevrolet.ca](http://mychevrolet.ca) for details. <sup>16</sup> Requires Iridescent Pearl Tricoat, Silver Ice Metallic, Summit White or Mosaic Black Metallic exterior colour.



## EXTERIOR COLOURS



G1W – Iridescent Pearl Tricoat<sup>1,2</sup>



G2X – Havana Brown Metallic<sup>1,2,3,4</sup>



G9K – Satin Steel Metallic<sup>1</sup>



GAN – Silver Ice Metallic



GAZ – Summit White



GB8 – Mosaic Black Metallic<sup>1</sup>



GGA – Black Currant Metallic<sup>1,2,3,4,5</sup>



GMU – Pepperdust Metallic<sup>1,2,3,4,5</sup>



GPA – Graphite Metallic<sup>1,2,3,5</sup>



GPJ – Cajun Red Tintcoat<sup>1,2</sup>

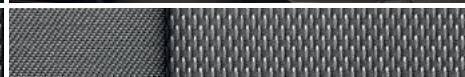
<sup>1</sup> Available at extra cost. <sup>2</sup> Not available on LS. <sup>3</sup> Not available on RS. <sup>4</sup> Not available with Dark Galvanized/Jet Black interior. <sup>5</sup> Not available on High Country.



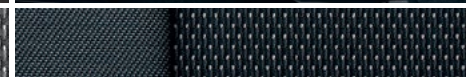
## INTERIOR FABRICS



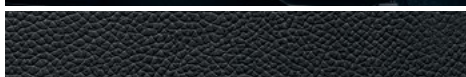
Jet Black Premium Cloth with Jet Black Accents<sup>1,2</sup>



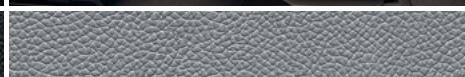
Medium Ash Grey Premium Cloth with Dark Atmosphere Accents<sup>2</sup>



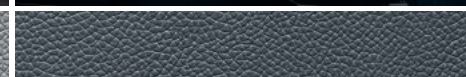
Dark Galvanized Premium Cloth with Jet Black Accents<sup>2,3</sup>



Jet Black Leather Appointments with Jet Black Accents<sup>4,5,6</sup>



Medium Ash Grey Leather Appointments with Dark Atmosphere Accents<sup>4</sup>



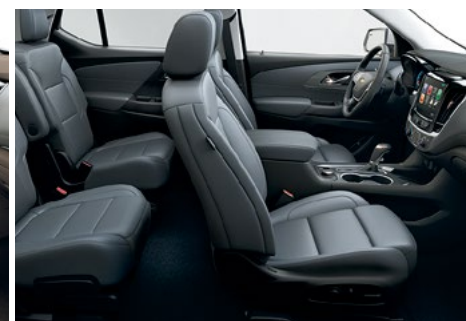
Dark Galvanized Leather Appointments with Jet Black Accents<sup>3,4,6</sup>



Jet Black Perforated Leather Appointments with Jet Black Accents<sup>7</sup>



Medium Ash Grey Perforated Leather Appointments with Dark Atmosphere Accents<sup>7</sup>



Dark Galvanized Perforated Leather Appointments with Jet Black Accents<sup>3,7</sup>



Loft Brown Premium Perforated Leather Appointments with Jet Black Accents<sup>8</sup>

<sup>1</sup> Standard on LS. <sup>2</sup> Standard on LT. <sup>3</sup> Not available with Havana Brown Metallic, Black Currant Metallic or Pepperdust Metallic exterior colour. <sup>4</sup> Standard on LT True North Edition. <sup>5</sup> Standard on RS. <sup>6</sup> Available on LT True North Edition with 8-passenger seating. <sup>7</sup> Standard on Premier. <sup>8</sup> Standard on High Country.



WHEELS



18" Bright Silver-painted aluminum  
(Standard on LS and LT)



20" machined-face aluminum with Technical Grey pockets  
(Standard on LT True North Edition)



20" Dark Android-painted aluminum  
(Standard on RS)



20" Argent Metallic machined-face aluminum  
(Standard on Premier)



20" Gloss Black-painted aluminum with Red accents  
(Available on Premier with Redline Edition)



20" polished-aluminum  
(Standard on High Country)

DIMENSIONS



EXTERIOR, mm (in.)

Width	1996 (78.6)
Front track	1709 (67.3)
Rear track	1702 (67.0)

INTERIOR, mm (in.) front row/2nd row/3rd row

Headroom	1049/1016/970 (41.3/40.0/38.2) <sup>1</sup>
Legroom	1041/975/851 (41.0/38.4/33.5)
Shoulder Room	1577/1580/1460 (62.1/62.2/57.5)
Hip Room	1476/1445/1232 (58.1/56.9/48.5)

CAPACITIES

Cargo Area, L (cu. ft.) <sup>2</sup>	
– Behind 3rd-row Seats	651 (23.0)
– 3rd-row Seats Folded	1637 (57.8)
– 2nd- and 3rd-row Seats Folded	2781 (98.2)
Fuel Tank, L (imp. gal.)	
– FWD models	73 (16.1)
– AWD models	82 (18.0)

CURB WEIGHT, kg (lb.)

– LS FWD	1979 (4362)
– LS AWD	2067 (4556)
– LT FWD	1976 (4356)
– LT AWD	2064 (4551)
– RS AWD	2067 (4556)
– Premier AWD	2128 (4692)
– High Country AWD	2180 (4807)

ESTIMATED FUEL CONSUMPTION RATINGS, L/100 km (mpg)<sup>3</sup>

	City	Highway
3.6L V6 FWD	13.0 (22)	8.8 (32)
3.6L V6 AWD	13.7 (21)	9.5 (30)

<sup>1</sup> With available power sunroof 1006/991/970 mm (39.6/39.0/38.2 in.). <sup>2</sup> Cargo and load capacity limited by weight and distribution. <sup>3</sup> Fuel consumption estimates based on GM testing in accordance with Government of Canada approved test methods. Refer to vehicles.nrcan.gc.ca for details. Your actual fuel consumption may vary.





## COMPLETE CARE

Experience Chevrolet Complete Care, a comprehensive coverage, warranty and protection program that comes standard with every new 2019 Chevrolet Traverse leased or purchased in Canada. Simply, it is designed around you, to make it easy to keep your Chevrolet like new – and give you the confidence you deserve when you need it most.

### YOUR COMPREHENSIVE NEW VEHICLE LIMITED WARRANTY.

2-year/48,000 km<sup>1</sup> Complimentary Oil Changes<sup>2</sup>

3-year/60,000 km<sup>1</sup> Base Warranty Coverage<sup>3</sup>

5-year/100,000 km<sup>1</sup> Powertrain Component Warranty Coverage<sup>3</sup>

5-year/100,000 km<sup>1</sup> Courtesy Transportation<sup>4</sup>

5-year/100,000 km<sup>1</sup> 24/7 Roadside Assistance<sup>4</sup>

6-year/160,000 km<sup>1</sup> Sheet Metal rust-through perforation coverage<sup>3</sup>

8-year/130,000 km<sup>1</sup> coverage<sup>3</sup> on specified major emission components.

1-month trial of Chevrolet Connected Services and OnStar Safety & Security Plan coverage<sup>5</sup>

Chevrolet Connected Access<sup>6</sup> with 10 years of standard connectivity, which enables services such as Vehicle Diagnostics<sup>7</sup>, Dealer Maintenance Notification<sup>7</sup> and more.

### OTHER OWNERSHIP PRIVILEGES AND PROGRAMS<sup>8</sup>

- Chevrolet Protection Plan – the only extended service plan backed by the resources and commitment of General Motors. The Chevrolet Protection Plan may be purchased at the time of sale or subsequently during the Base Warranty Coverage period.<sup>9</sup>
- Chevrolet Certified Service – to help your Chevrolet vehicle live up to its performance promise, Chevrolet Certified Service – found exclusively at your Chevrolet dealer – is there. With all the engineering excellence in your vehicle, GM-trained technicians have the expertise to care for all of it.
- Chevrolet Owner Centre – as an owner, take advantage of the Chevrolet Owner Centre. This online owner's destination gives you access to contests, current offers and the latest driving and maintenance tips. Find out more at [mychevrolet.ca](http://mychevrolet.ca).

### TO HELP YOU PURCHASE OR LEASE A NEW VEHICLE

- Purchase Financing and Leasing – on-the-spot financing; see dealer for full details.<sup>10</sup>
- GM Student Bonus Program – students or recent graduates of high school, college or university<sup>10</sup> may be entitled to receive a Student Bonus Vehicle Redemption Allowance of \$500 or \$750<sup>8</sup> (tax inclusive) (purchased vehicle dependant) to use towards the purchase, lease or finance of one eligible new Chevrolet vehicle.
- GM Card<sup>®</sup> – Cardholders may redeem Earnings towards the total purchase price or lease down payment of an eligible new Chevrolet car, truck or crossover. Restrictions and limitations apply. For full program details, visit [gmcards.ca](http://gmcards.ca).

**INFORMATION RESOURCES** You can find more information about these programs from your Chevrolet dealer, or at these information centres:

- The Chevrolet website at [chevrolet.ca](http://chevrolet.ca)
- The GM Customer Care Centre at **1-800-GM-DRIVE (1-800-463-7483 or 1-800-263-3830 for TDD users)**.

**A WORD ABOUT THIS BROCHURE** Some of the equipment shown or described throughout this brochure may be available at extra cost. We have tried to make this brochure comprehensive and factual. We reserve the right, however, to make changes at any time, without notice, in prices, colours, materials, equipment, specifications, models and availability. Specifications, dimensions, measurements, ratings and other numbers in this brochure and other printed materials provided at the dealership or affixed to vehicles are approximates based upon design and engineering drawings and prototypes and laboratory tests. Your vehicle may differ due to variations in manufacture and equipment. Since some information may have been updated since the time of printing, please check with your Chevrolet dealer for complete details. General Motors of Canada Company reserves the right to lengthen or shorten the model year for any product, for any reason, or to start and end model years at different times. Certain vehicle features may lose their usefulness over time due to obsolescence from technological changes. Unless otherwise noted, all claims based on the latest available competitive information. Excludes other GM vehicles.

**ENGINES** Chevrolet products are equipped with engines produced by GM Global Propulsion Systems or other suppliers to GM worldwide. The engines in Chevrolet products may also be used in other GM makes and models.

**ASSEMBLY** Chevrolet vehicles and their components are assembled or produced by different operating units of General Motors, its subsidiaries or suppliers to GM worldwide. We sometimes find it necessary to produce Chevrolet vehicles with different or differently sourced components than originally scheduled. Since some options may be unavailable when your vehicle is assembled, we suggest you verify that your vehicle includes the equipment you ordered and that, if there were changes, they are acceptable to you.

**FLEET ORDERS** Some standard content may be deleted on fleet orders. See dealer for details.

### AN IMPORTANT NOTE ABOUT ALTERATIONS AND WARRANTIES

Installations or alterations to the original equipment vehicle (or chassis) as distributed by General Motors are not covered by the New Vehicle Limited Warranty. The special body company, assembler, equipment installer or upfitter is solely responsible for warranties on the body or equipment and any alterations (or any effect of the alterations) to any of the parts, components, systems or assemblies installed by GM. General Motors is not responsible for the safety or quality of design features, materials or workmanship of any alterations by such suppliers.

**TRADEMARKS** The marks appearing in this brochure including, but not limited to, General Motors, GM, Chevrolet, the Chevrolet emblem, Traverse and their respective logos, emblems, slogans and vehicle model names and body designs; and other marks such as Duralife, Find New Roads, IntelliBeam, myChevrolet, OnStar, the OnStar emblem, Smart Slide, StabiliTrak and SkyScape are trademarks of General Motors LLC, OnStar LLC and/or General Motors of Canada Company, its subsidiaries, affiliates or licensors. Apple, Apple CarPlay and iPhone are trademarks of Apple Inc., registered in the U.S. and other countries. Bluetooth is a registered trademark of Bluetooth SIG, Inc. Bose is a registered trademark and Richbass is a trademark of the Bose Corporation. Facebook is a registered trademark of Facebook, Inc. © 2018 Sirius XM Canada Inc. "SiriusXM," the SiriusXM logo, channel names and logos are registered trademarks of Sirius XM Radio Inc. and are used under license. All rights reserved. Twitter is a trademark of Twitter, Inc. YouTube is a registered trademark and Android and Android Auto are trademarks of Google LLC. Wi-Fi is a registered trademark of Wi-Fi Alliance.

**COPYRIGHT** ©2018 General Motors of Canada Company. All rights reserved. All text, images, graphics, and other materials in this brochure are subject to the copyright and other intellectual property rights of General Motors LLC and/or General Motors of Canada Company. These materials may not be reproduced, distributed or modified without the express written permission of General Motors LLC and/or General Motors of Canada Company. November 2018.

<sup>1</sup> Whichever comes first. <sup>2</sup> Limit of four complimentary Lube-Oil-Filter services in total. Fluid top-offs, inspections, tire rotations, wheel alignments and balancing, etc., are not covered. Conditions apply. See dealer for details. <sup>3</sup> Conditions apply. See Warranty Booklet for details. <sup>4</sup> Conditions apply. See Owner's Manual for details. <sup>5</sup> Includes navigation services, Remote Access Plan, plus a 3 GB or 1-month (whichever comes first) data plan trial from the vehicle delivery date. Data plan provided by AT&T or its local service provider. Requires vehicle electrical system (including battery), wireless service and GPS satellite signal to be available and operating for features to function properly. Visit [onstar.ca](http://onstar.ca) for more details. Availability subject to change. <sup>6</sup> Standard connectivity available only to original purchaser for 10 years. Connected Access services are subject to change. Does not include emergency or security services. Compatible 4G LTE wireless coverage required. See [onstar.ca](http://onstar.ca) for details and limitations. <sup>7</sup> Capabilities vary by model. Message and data rates may apply. Requires contact method on file and enrollment to receive alerts. Not all issues will deliver alerts or notifications. See [onstar.ca](http://onstar.ca) for details and limitations. <sup>8</sup> Conditions apply. <sup>9</sup> Please work with your dealer to select the plan that is suitable for your driving needs. Dealers are free to set their own prices. <sup>10</sup> Subject to eligibility.





**FIND** **NEW** **ROADS**™

**CHEVROLET.CA**



[TWITTER.COM/CHEVROLETCanada](https://twitter.com/CHEVROLETCanada)



[YOUTUBE.COM/CHEVROLETCanada](https://youtube.com/CHEVROLETCanada)



[FACEBOOK.COM/CHEVROLETCanada](https://facebook.com/CHEVROLETCanada)



[INSTAGRAM.COM/CHEVROLETCanada](https://instagram.com/CHEVROLETCanada)